

Specification

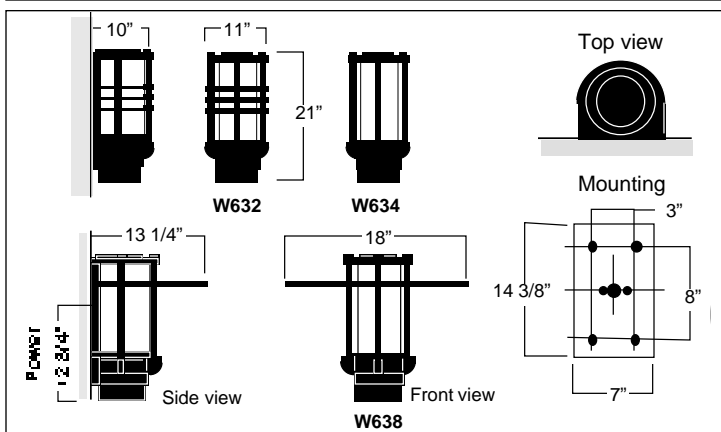
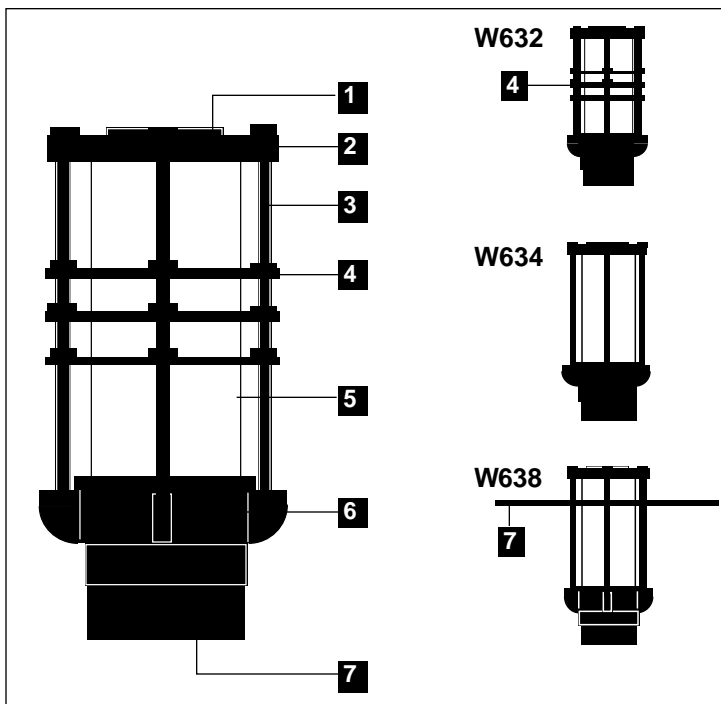
W632 . W634 . W638

All exposed cast aluminum components are made of non corrosive pure aluminum copper free (Aluminum is less than .1% copper content.#356 alloy.)
Eclipse is designed designed to accommodate various lamp sources, and wattage.

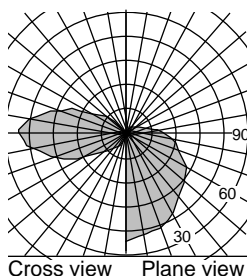
Finish: All polyester powder baked coatings preceded with a 5 baths preparation process. Meets military grade MIL-C781706 with a 2000 hours salt spray test.

- Pulse rated porcelain socket or 75W/600V thermoplastic compact fluorescent socket.
- One-piece molded silicone gasket with memory retention.
- High power factor CWA ballast. Or 98% P.F.electronic smart ballast with end of life detection for compact fluorescent.
- All stainless steel hardware.

- 1- Removable top cover, for quick access to lamp.
- 2- Cast aluminum top sealed cover.
- 3- 1/2" dia. solid aluminum struts.
- 4- W632 only; Set of 3 cast aluminum blades.
- 5- White translucent U.V. protected high impact acrylic diffuser.
- 6- Cast aluminum ballast base housing.
- 7- Removable bottom cover.
- 8- **W638** only: Field adjustable semi oblong aluminum reflector disc.



Photometry



Separate updated technical specification sheets with related models and light sources with I.E.S formatted photometry are available on www.luminis.com.

Certification

UL. Wet Location.

Mounting.

Max. weight: 30 lbs. Installation: Mounts over a standard 4" octagonal box with 3 1/2" c/c mounting holes. Additional mounting holes are provided with wall plate.

For options details and specifications, please refer to page 42

Model#	Light source selection	Voltage	Finish	Options
<input type="checkbox"/> W632 <input type="checkbox"/> W634 <input type="checkbox"/> W638	MH (ED17) <input type="checkbox"/> M70 <input type="checkbox"/> M100 HPS (ED17) <input type="checkbox"/> H70 <input type="checkbox"/> H100 INC. (A19) <input type="checkbox"/> A100 (Lamps by others)	120 V Standard factory prewired (If no voltage is specified) For other voltages, please specify with catalog number. H.I.D. <input type="checkbox"/> 208 V <input type="checkbox"/> 240 V <input type="checkbox"/> 277 V <input type="checkbox"/> 347 V <input type="checkbox"/> 480 V COMP. FLUO. Smart ballast 120/277 <input type="checkbox"/> 347 V (To specify)	(Refer to color chart) Standard selection <input type="checkbox"/> WHT: Snow white <input type="checkbox"/> BKT: Jet black <input type="checkbox"/> BZT: Bronze <input type="checkbox"/> GRT: Titanium gray <input type="checkbox"/> DGT: Gun metal <input type="checkbox"/> CHT: Champagne <input type="checkbox"/> MST: Matte silver <input type="checkbox"/> GNT: Forest green Optional colors <input type="checkbox"/> CS: Custom color <input type="checkbox"/> RAL: RAL# color	Accessories <input type="checkbox"/> DL1: 50W/12V Down light <input type="checkbox"/> DL2: Up light glow <input type="checkbox"/> DLC: Up/down light combination. <input type="checkbox"/> OS: 18" dia. alum. oblong disc Note: DL1 & DLC options are not available when EM42S Electrical <input type="checkbox"/> EM42S: 1 lamp (26/32/42W) EM battery. <input type="checkbox"/> FS: Fuse <input type="checkbox"/> PH1: 120/277V photo cell <input type="checkbox"/> PH2: 347V photo cell <input type="checkbox"/> QS: Standby lamp socket. <input type="checkbox"/> QRS: H.I.D. lamp restrike Note: EM optional battery test switch and pilot lamp are installed remotely. (See page 72)

Luminaires may be altered for design improvements or discontinued without prior notice.